

70歳女性

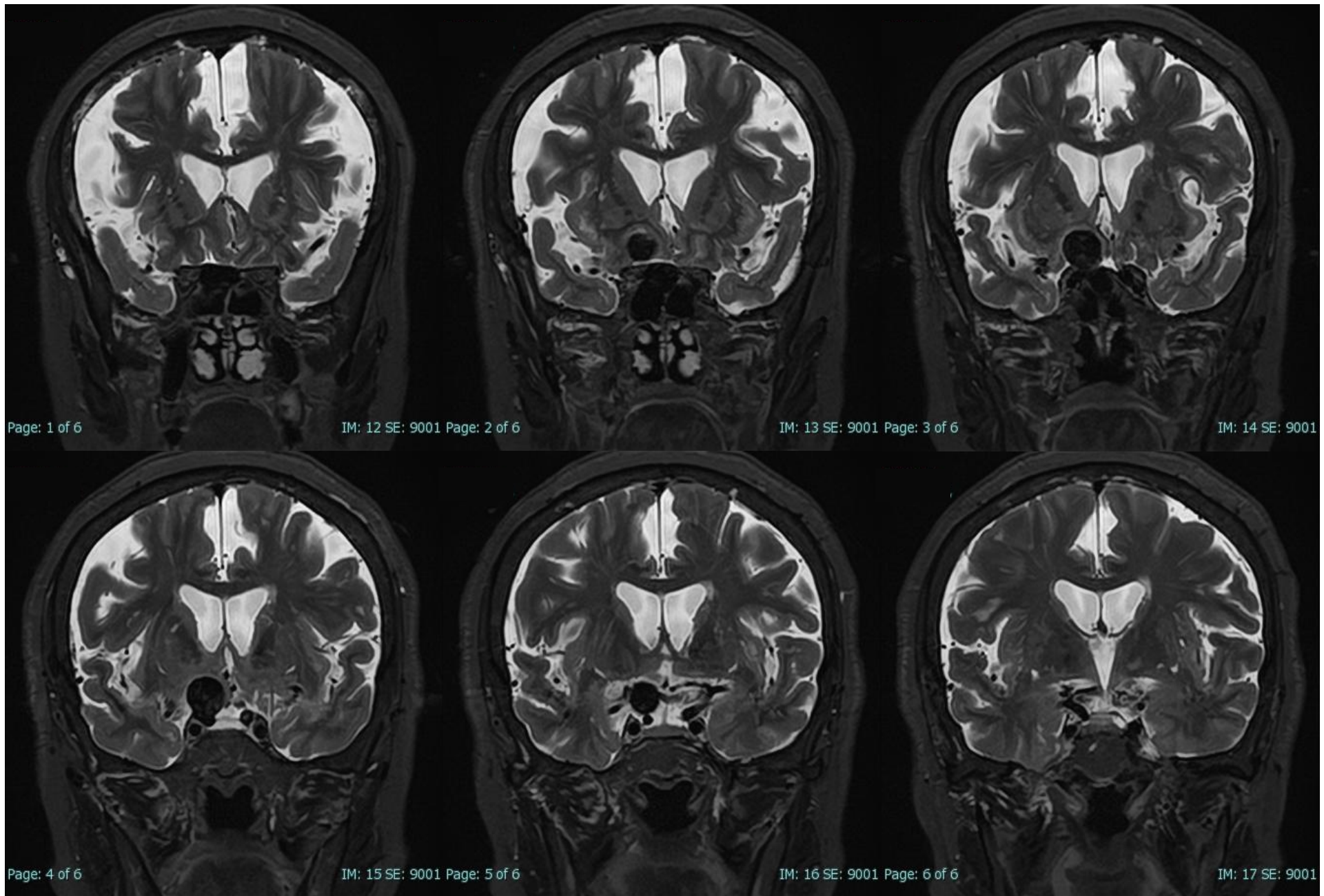
large C2 AN

【現病歴】

右眼の見えにくさが進行するため近医眼科受診。3カ月前に認めなかった視野狭窄を指摘され、近医脳神経外科クリニック紹介受診。MRIで右C2大型動脈瘤を指摘され、精査加療目的で当科外来紹介受診。

【既往歴, 家族歴】

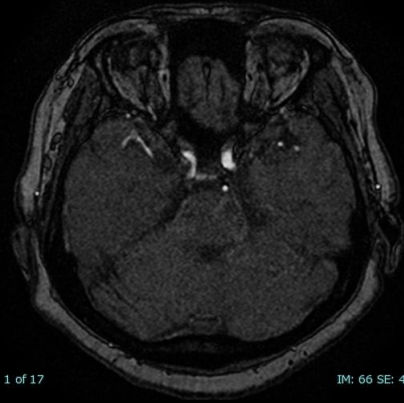
高血圧



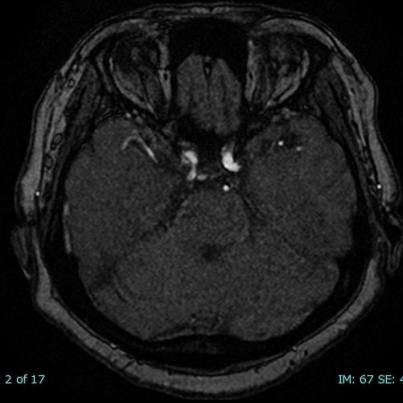
初診時MRI



初診時MRA



Page: 1 of 17



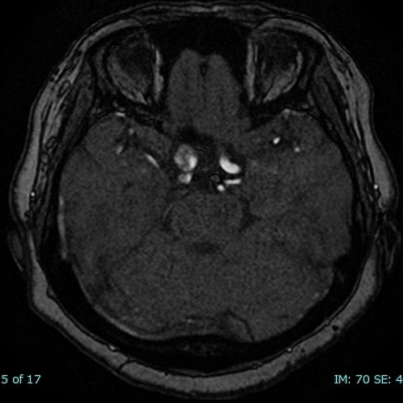
IM: 66 SE: 4002 Page: 2 of 17



IM: 67 SE: 4002 Page: 3 of 17

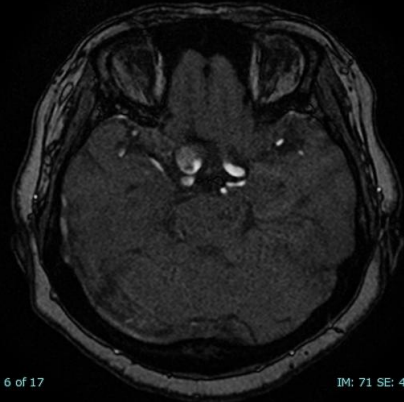


IM: 68 SE: 4002 Page: 4 of 17

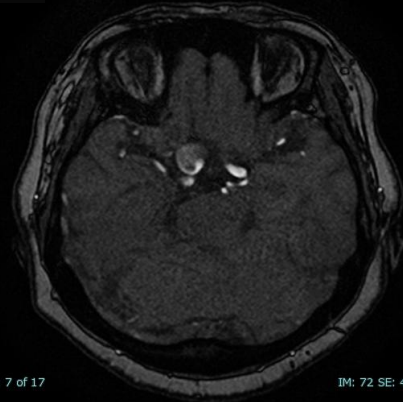


IM: 69 SE: 4002 Page: 5 of 17

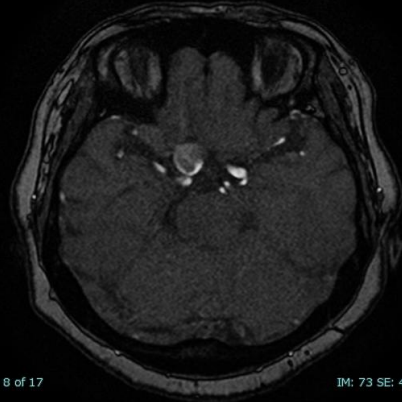
IM: 70 SE: 4002



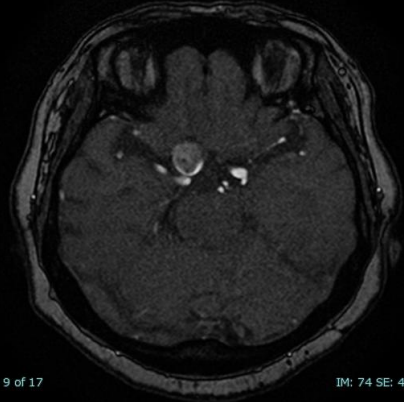
Page: 6 of 17



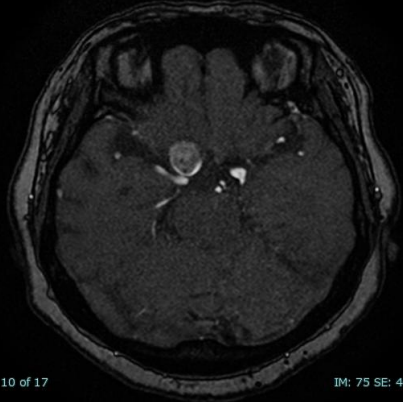
IM: 71 SE: 4002 Page: 7 of 17



IM: 72 SE: 4002 Page: 8 of 17

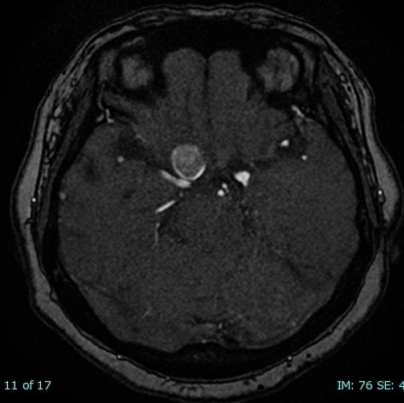


IM: 73 SE: 4002 Page: 9 of 17

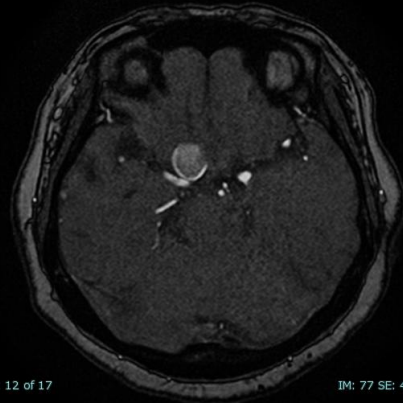


IM: 74 SE: 4002 Page: 10 of 17

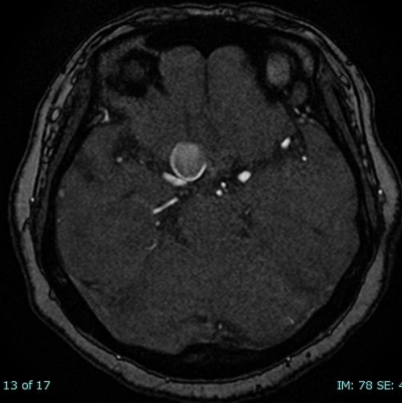
IM: 75 SE: 4002



Page: 11 of 17



IM: 76 SE: 4002 Page: 12 of 17



IM: 77 SE: 4002 Page: 13 of 17

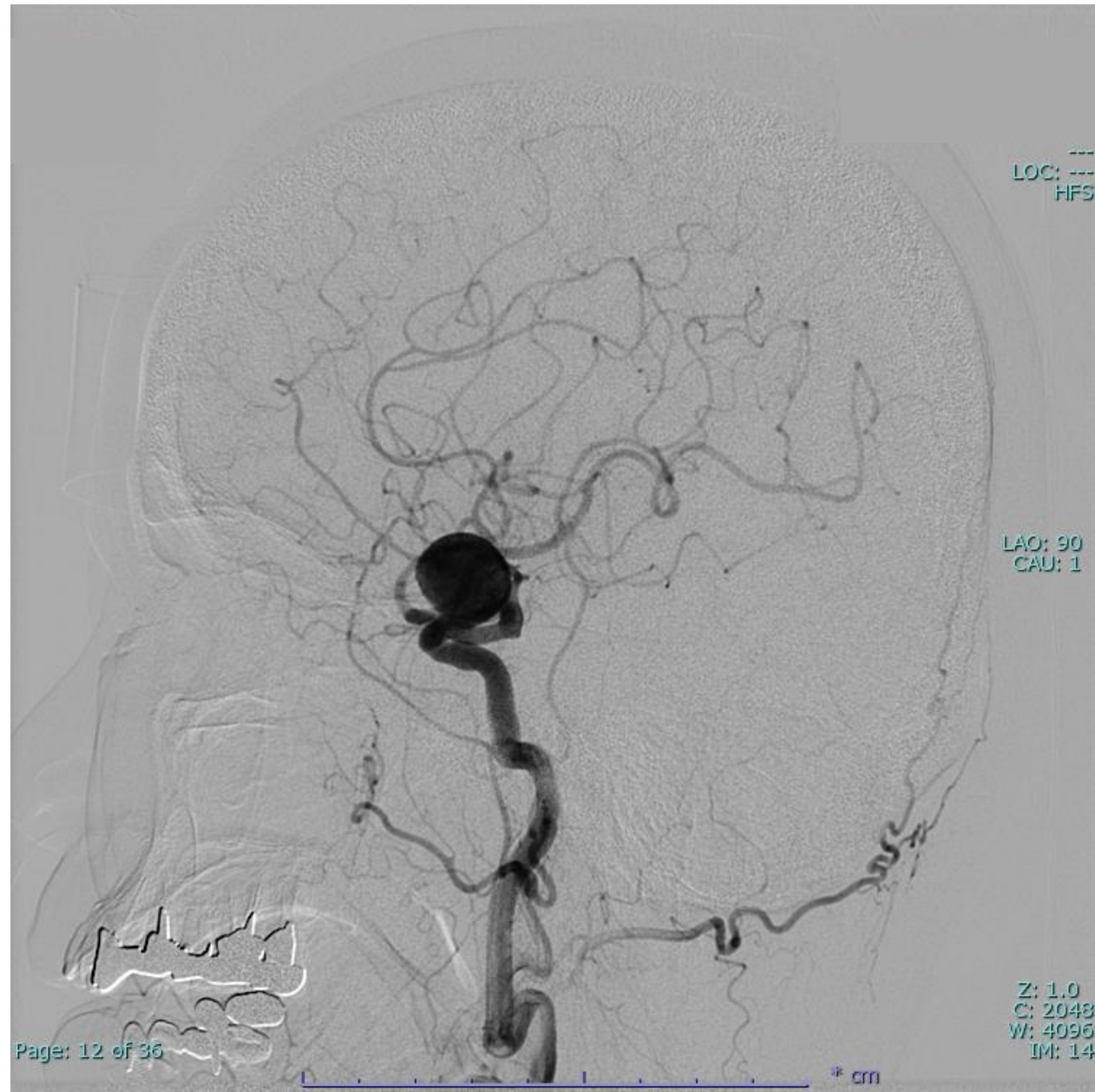
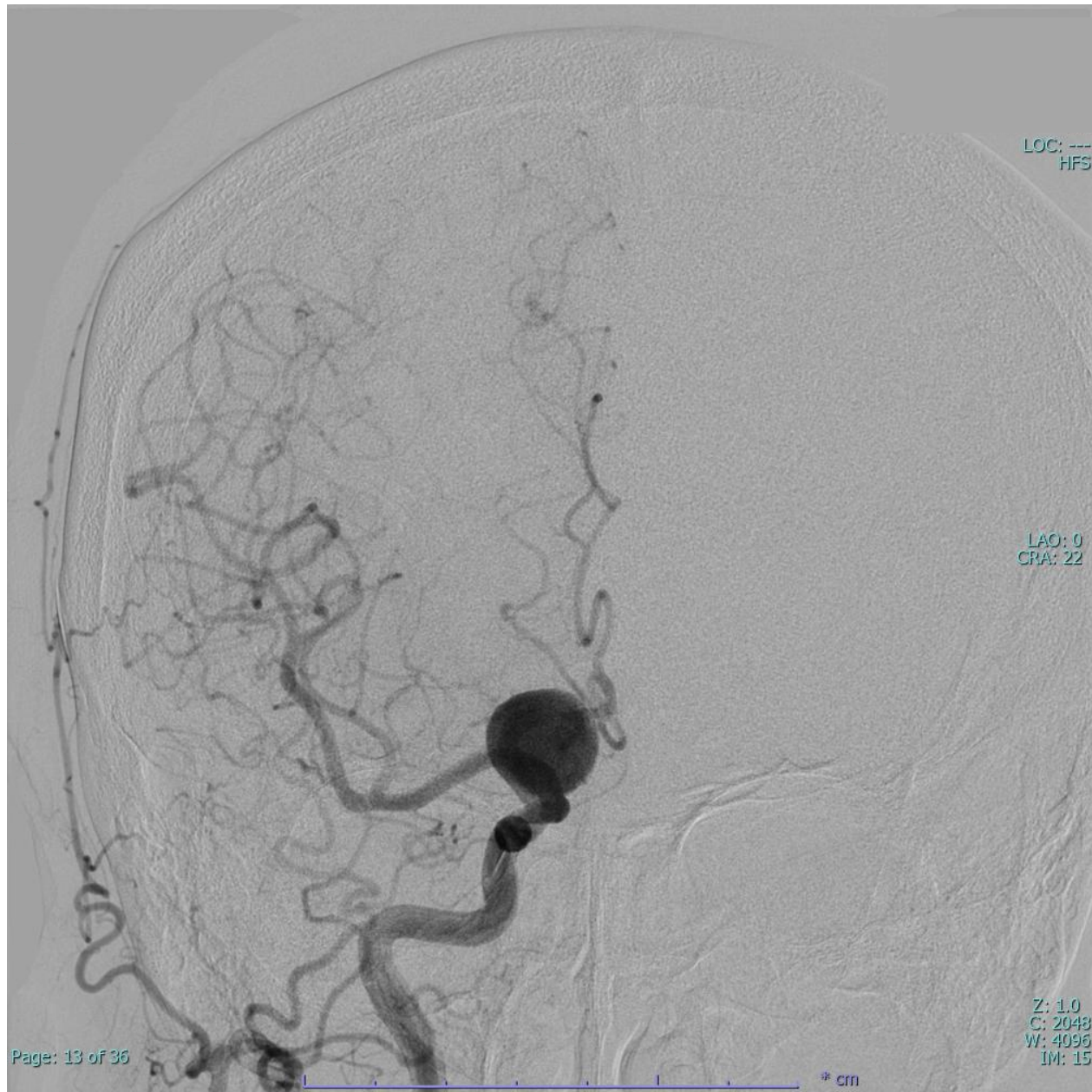


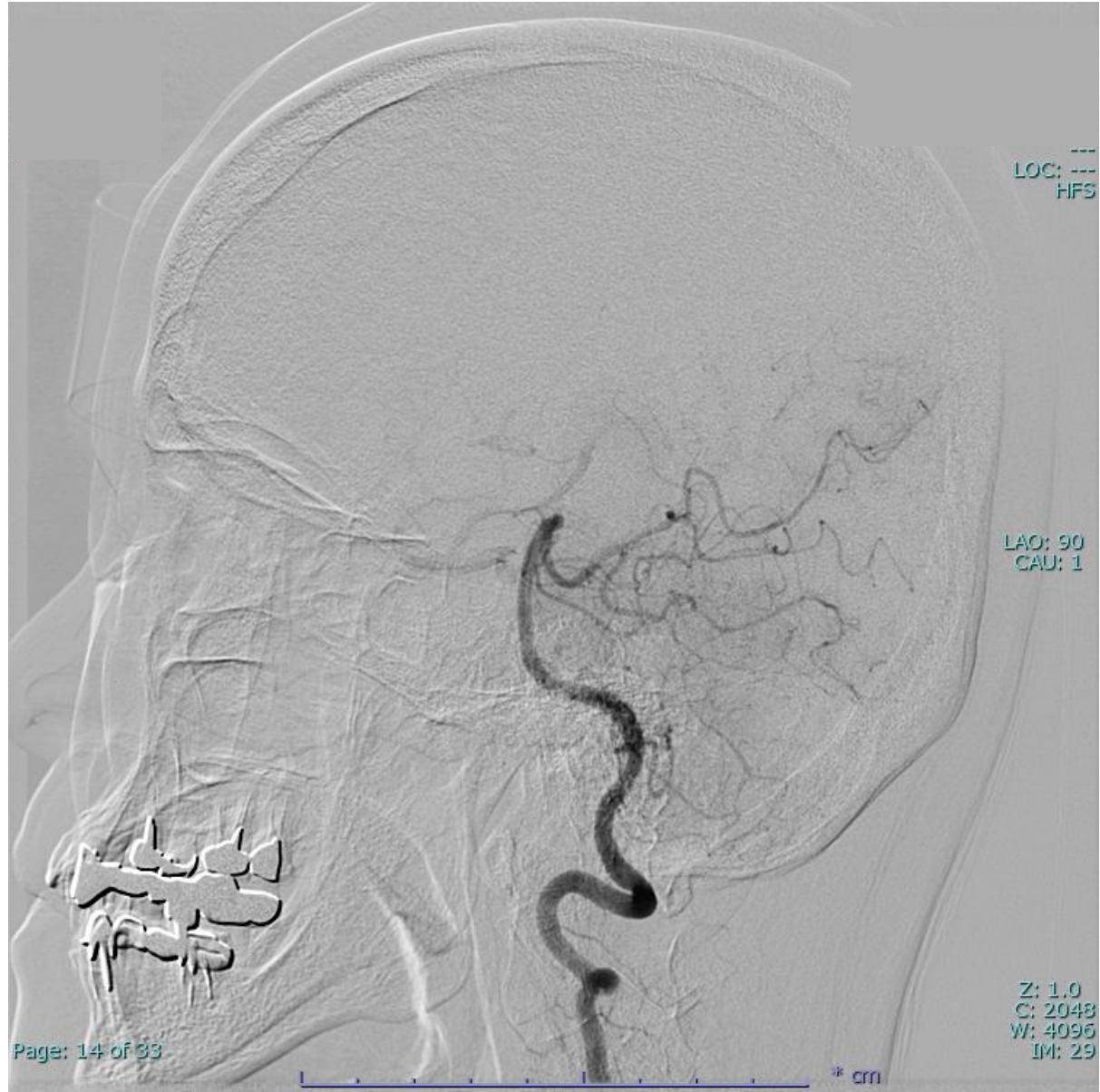
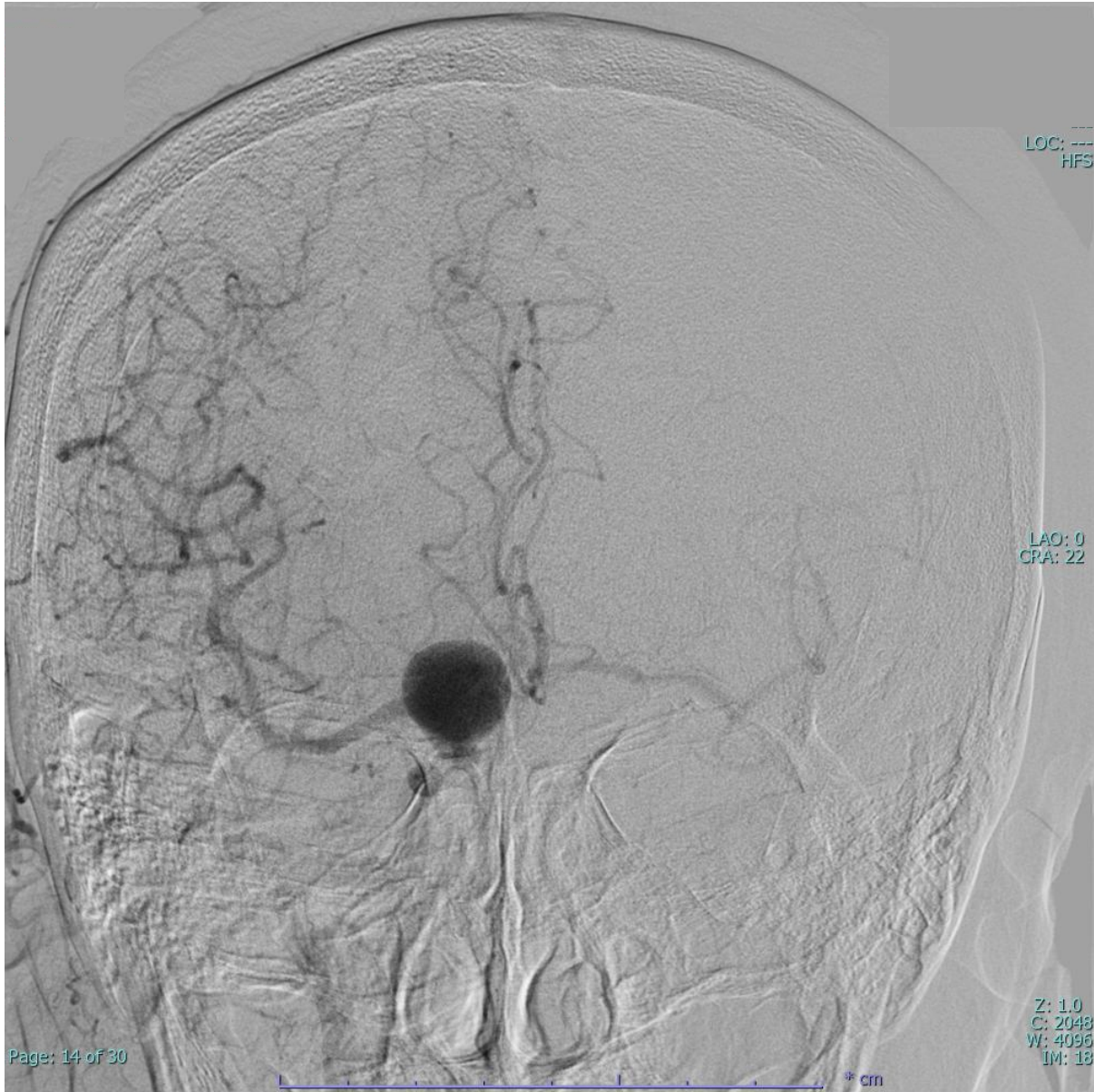
IM: 78 SE: 4002 Page: 14 of 17

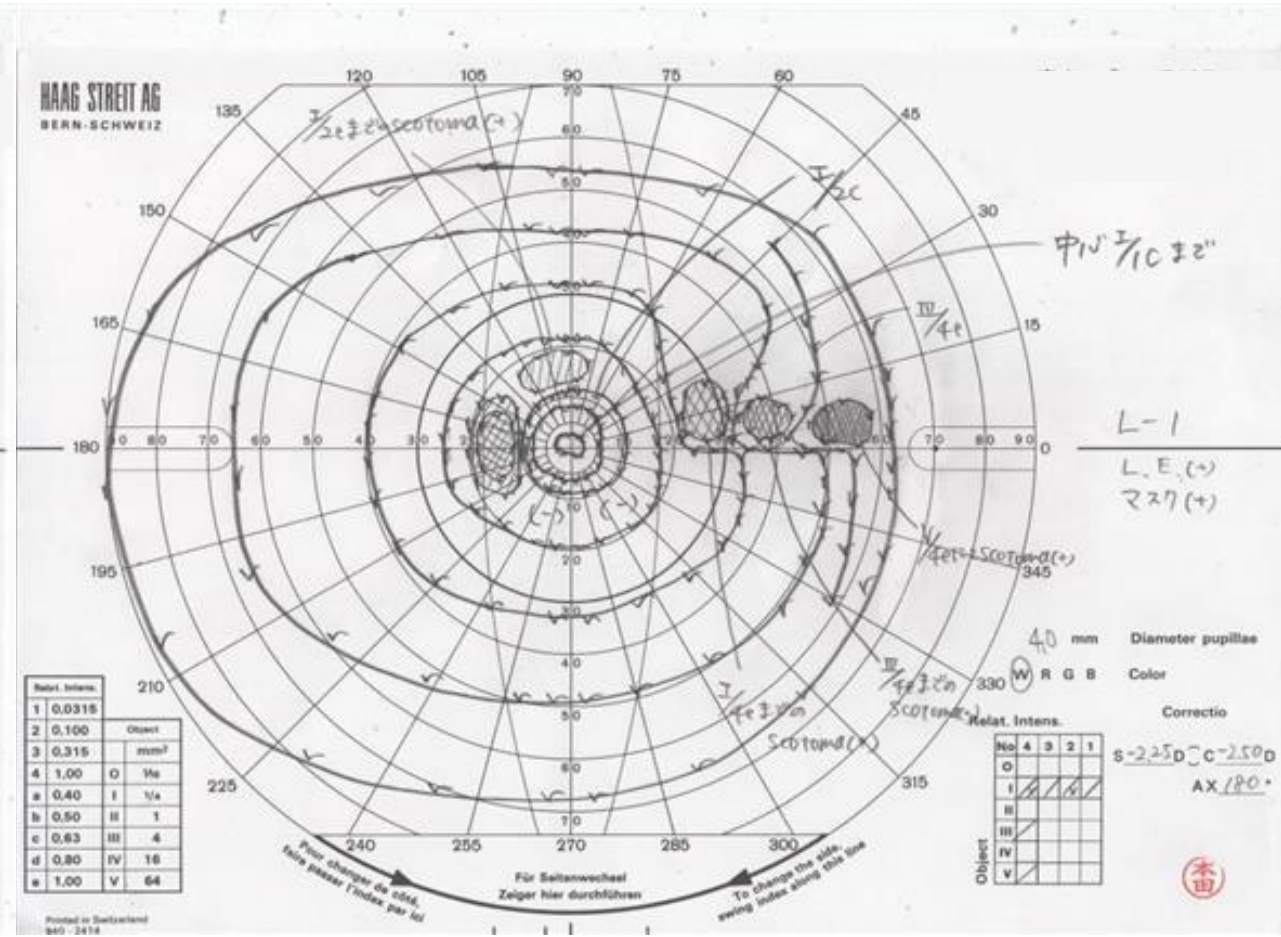
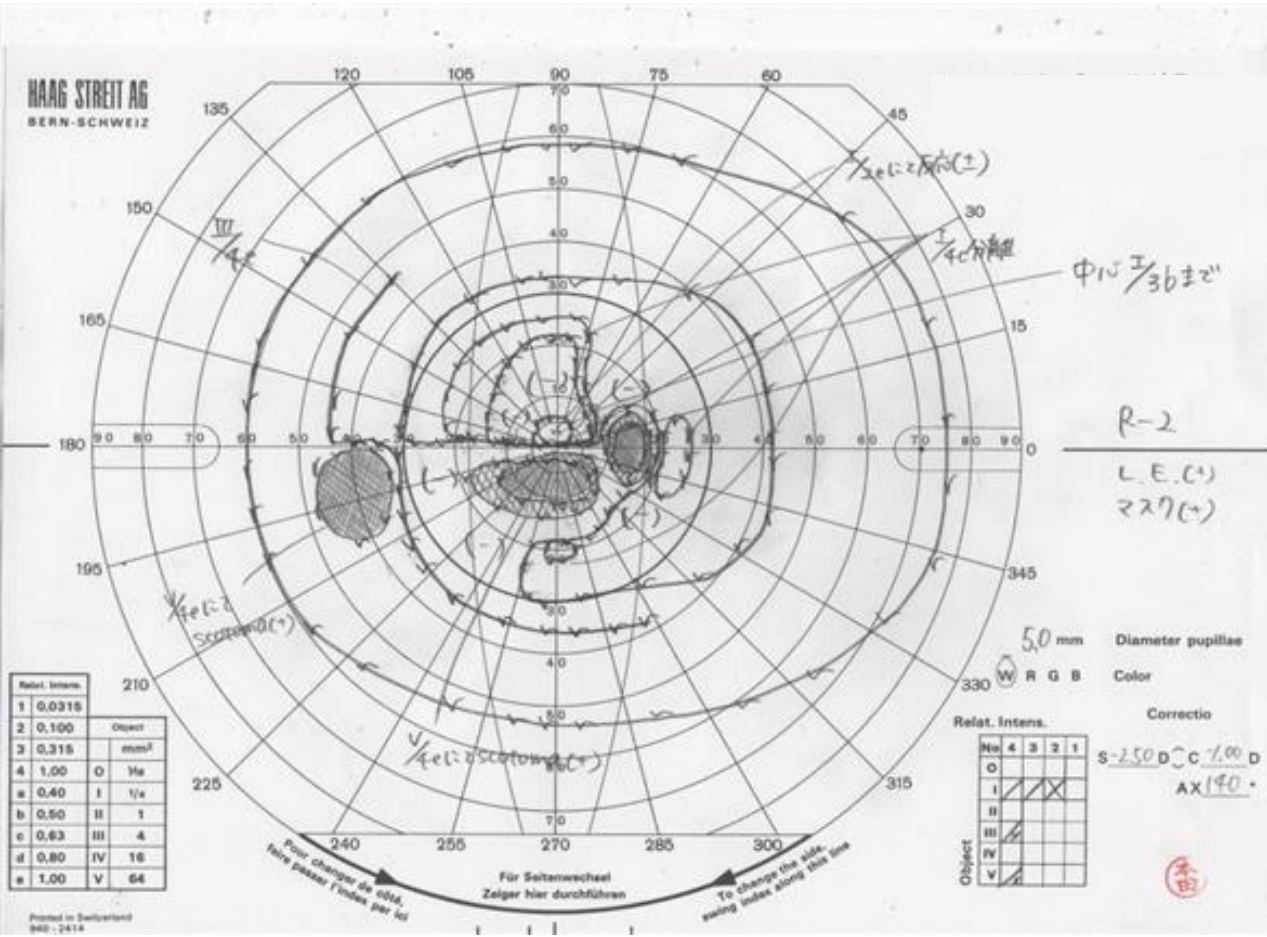


IM: 79 SE: 4002 Page: 15 of 17

IM: 80 SE: 4002







RV = 0.01 (0.08 x x S -5.50D: C -1.00D Ax 140°) ← 3カ月前 矯正視力0.8
 LV = 0.07 (0.8 x x S -5.25D: C -2.50D Ax 180°)

本症例のポイント

- 大型動脈瘤
- 症候性(進行性の視力視野障害)

検討事項

- 治療法(直達術, 血管内治療)の選択
- 直達術での根治性を考慮した治療戦略