

Case 4

64F

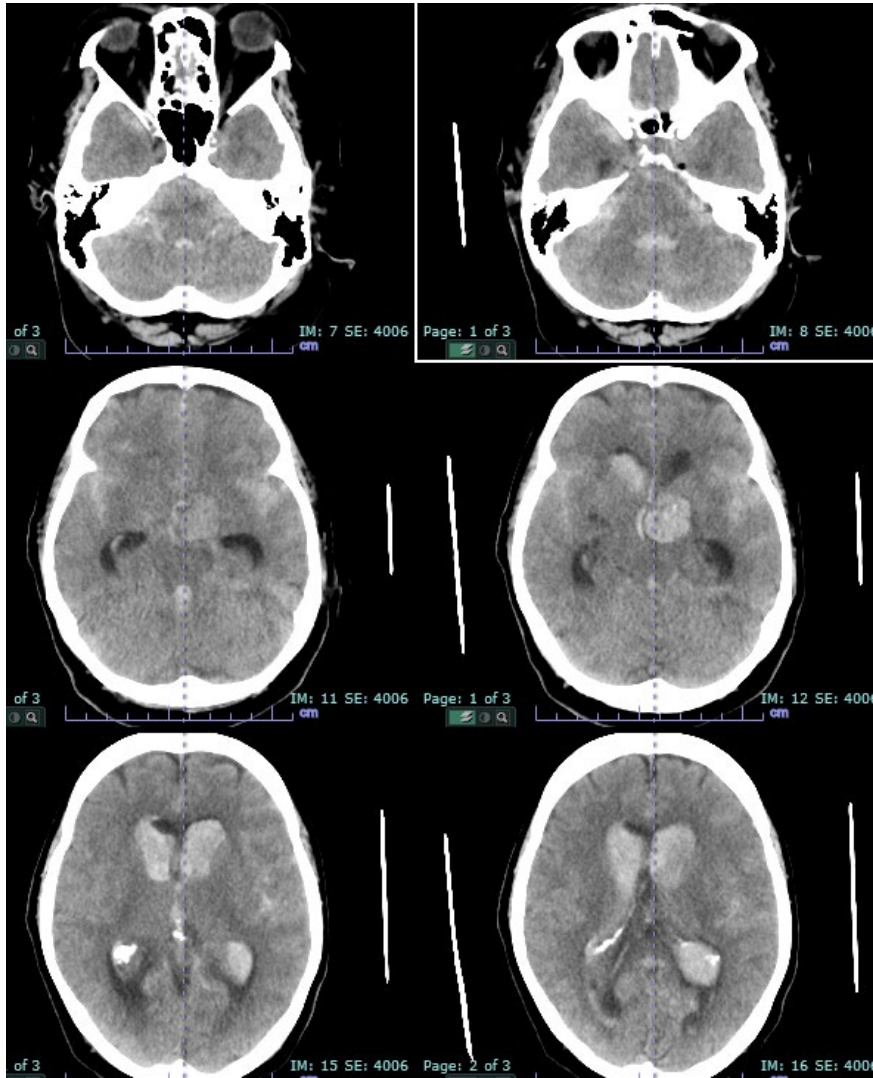
**Lt. IC bif. Large Aneurysm
(previously ruptured & coiled, recurrence)**

Case 4 64F

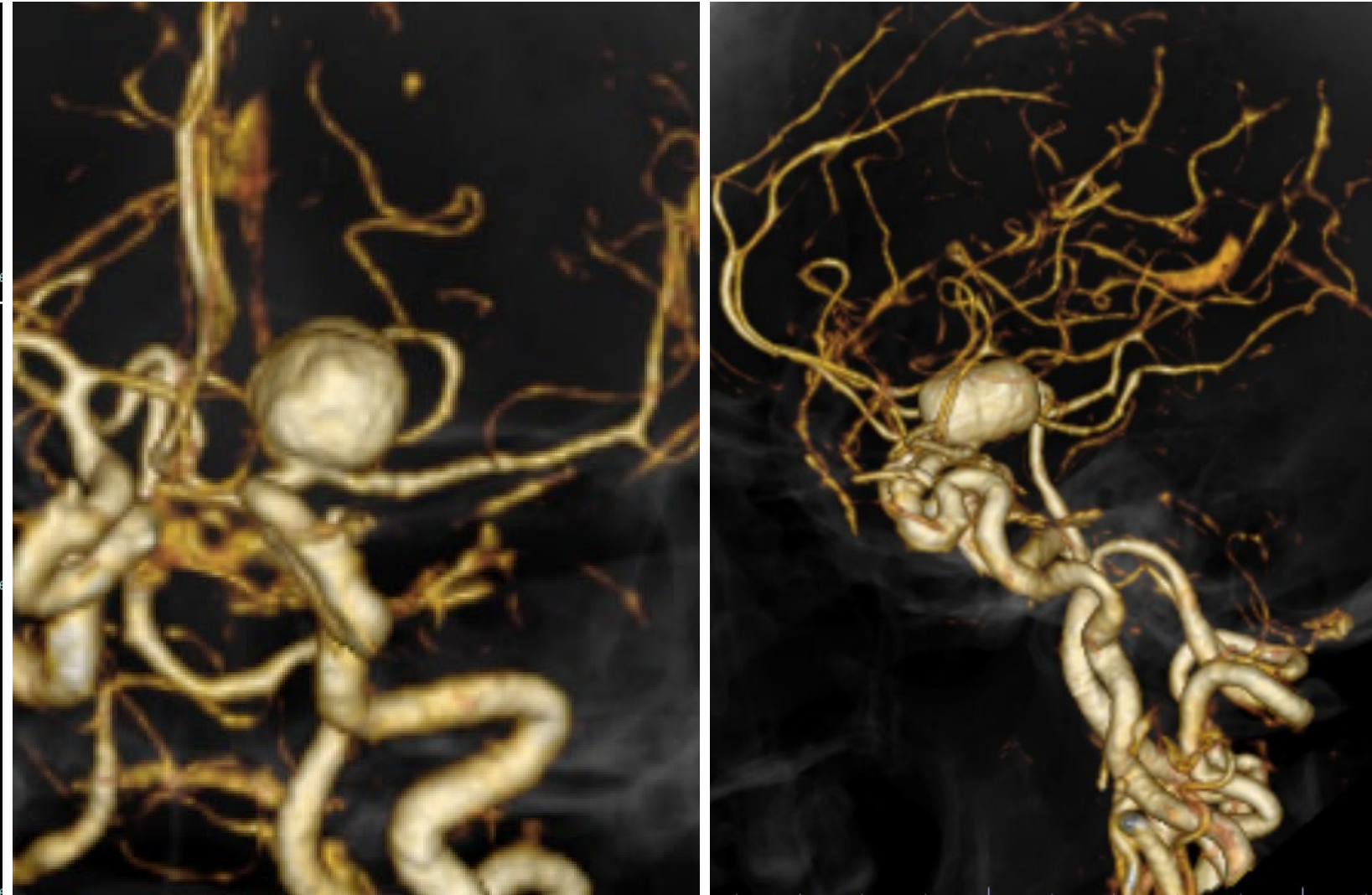
現病歴	2021年X月Y日に意識障害で発症。SAH (WFNS Grade 5, ruptured IC bif. large AN)と診断し、同日coiling。 リハビリテーション目的の転院後のフォローアップで再発を認めた。
既往歴	高血圧症
内服薬	ランソプラゾール 15mg /day
生活歴	飲酒(一)喫煙歴あり(1日10本x40年以上)
現症	高次脳機能障害あり、 四肢麻痺、脳神経障害はなし 自宅内では独歩で生活 mRS 3

Initial admission (SAH)

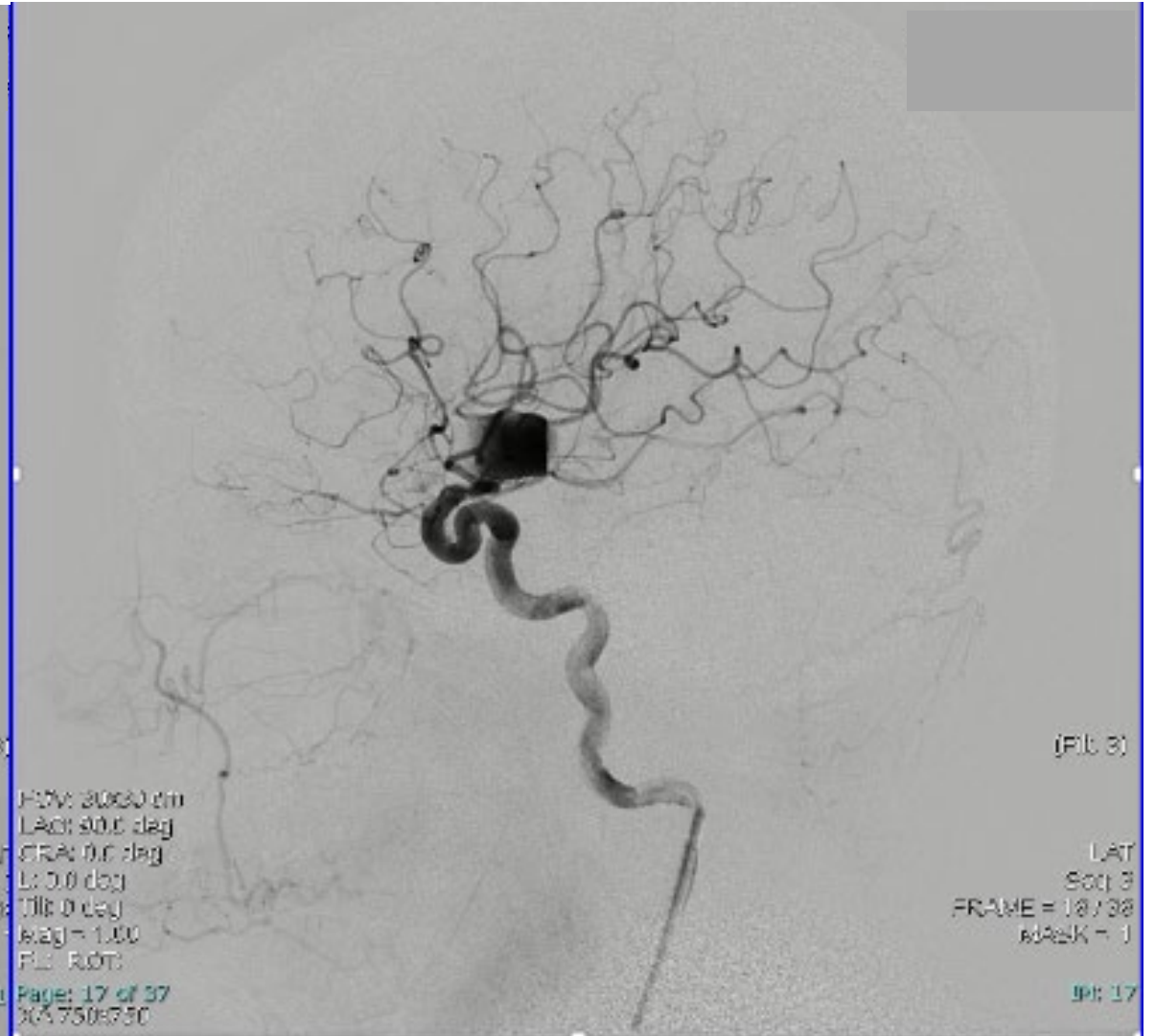
Head CT



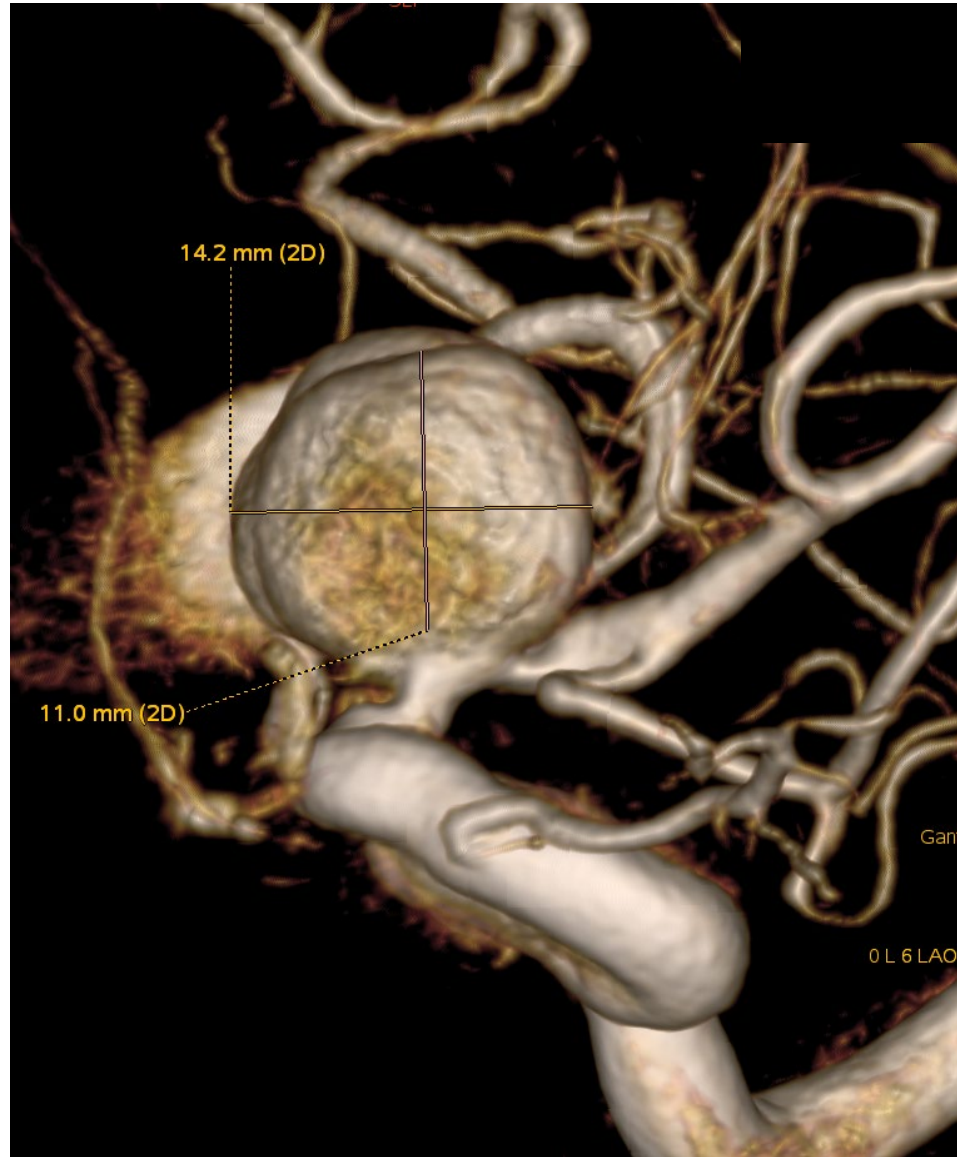
3D CTA



Lt. ICAG

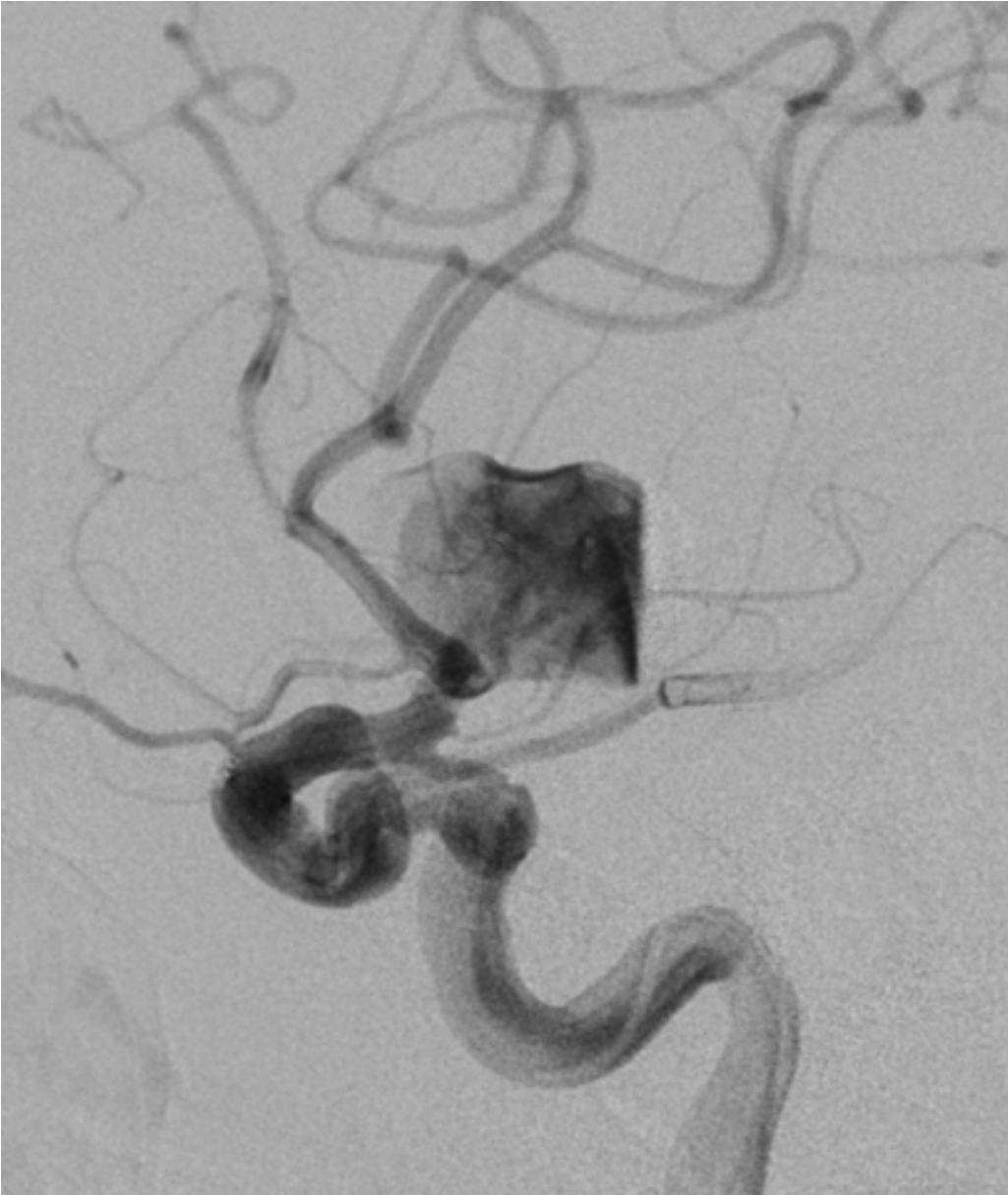


3D-RA

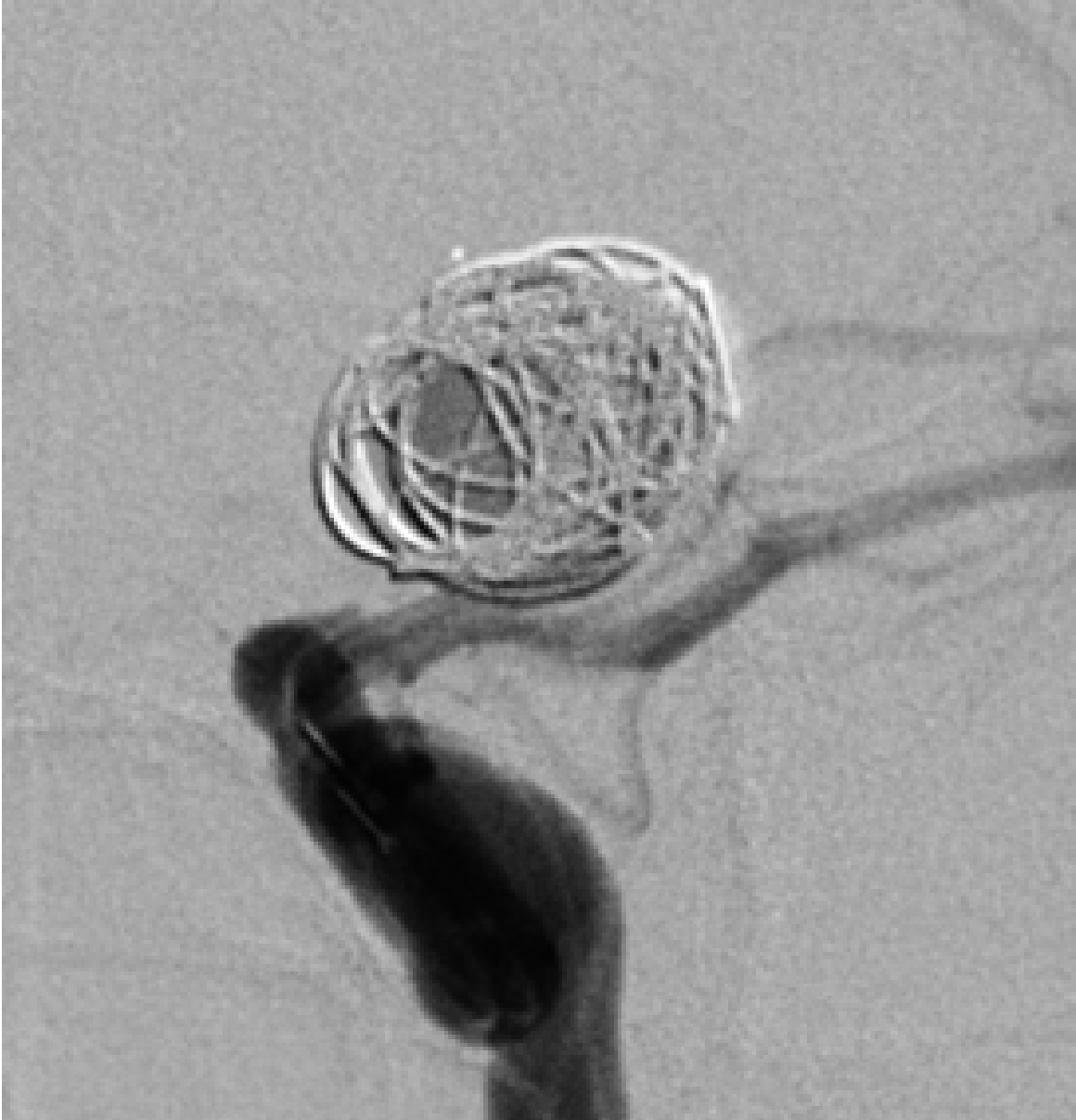


AN size :11.0mm x 14.2mm x 17.6mm, Neck 6.8mm

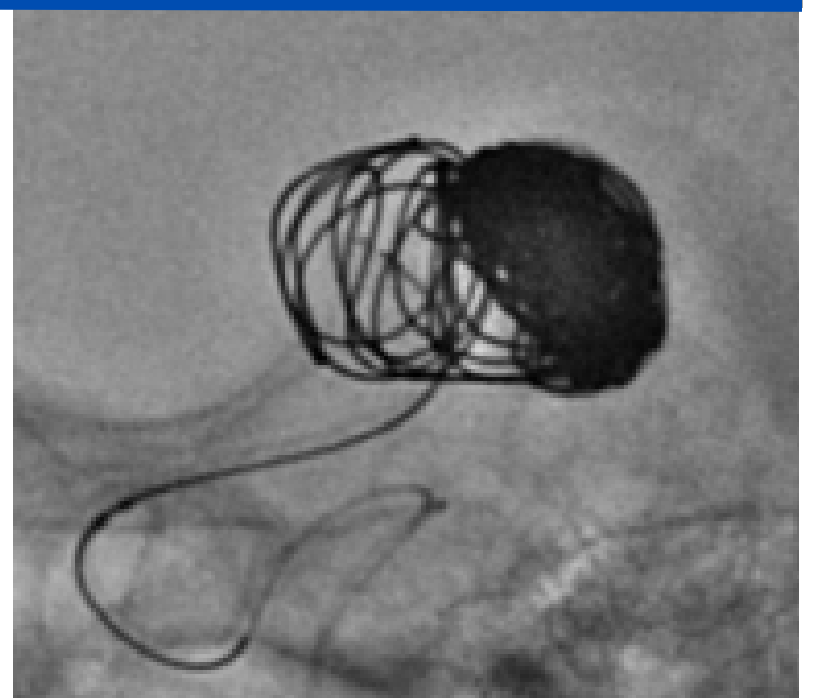
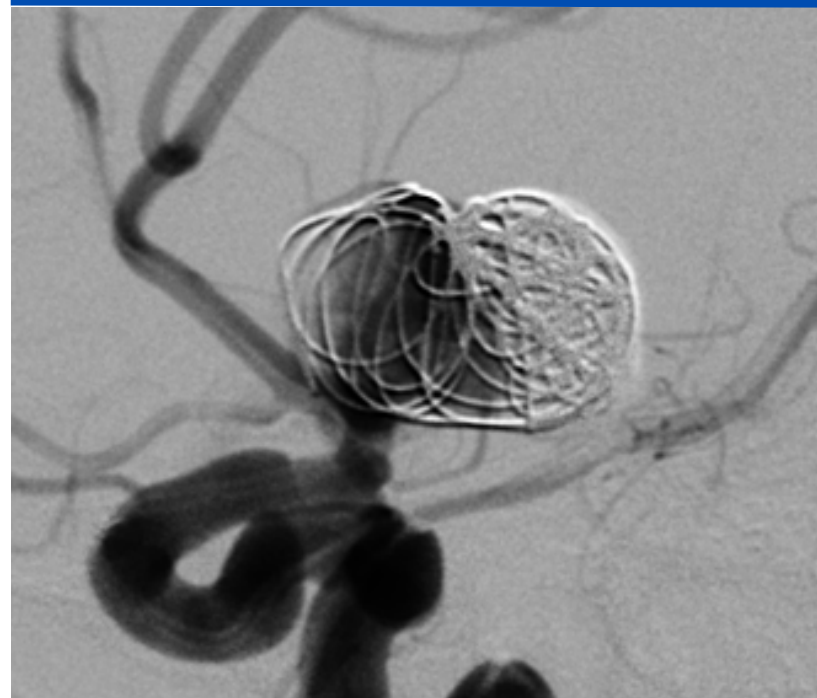
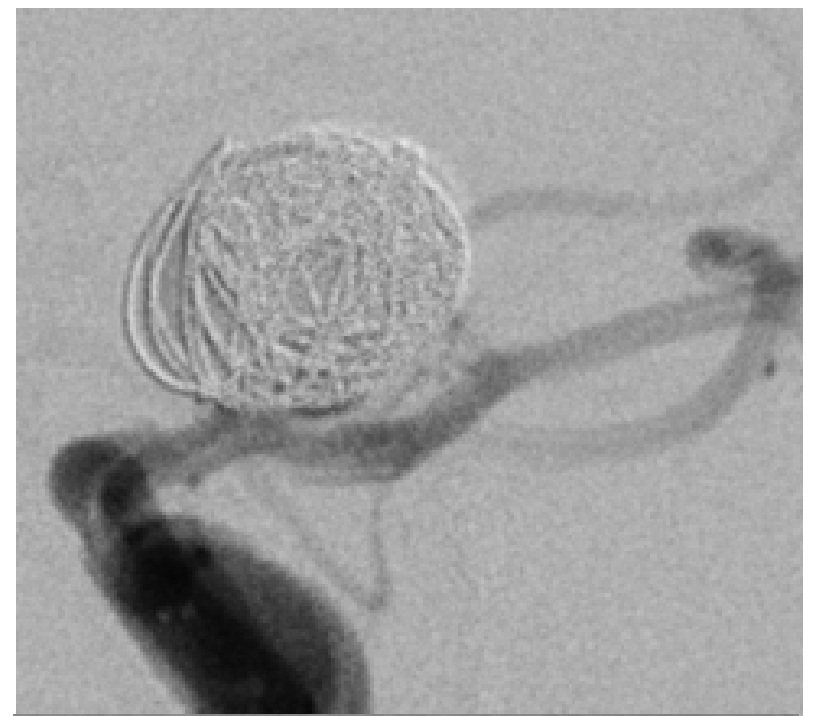
Working angles

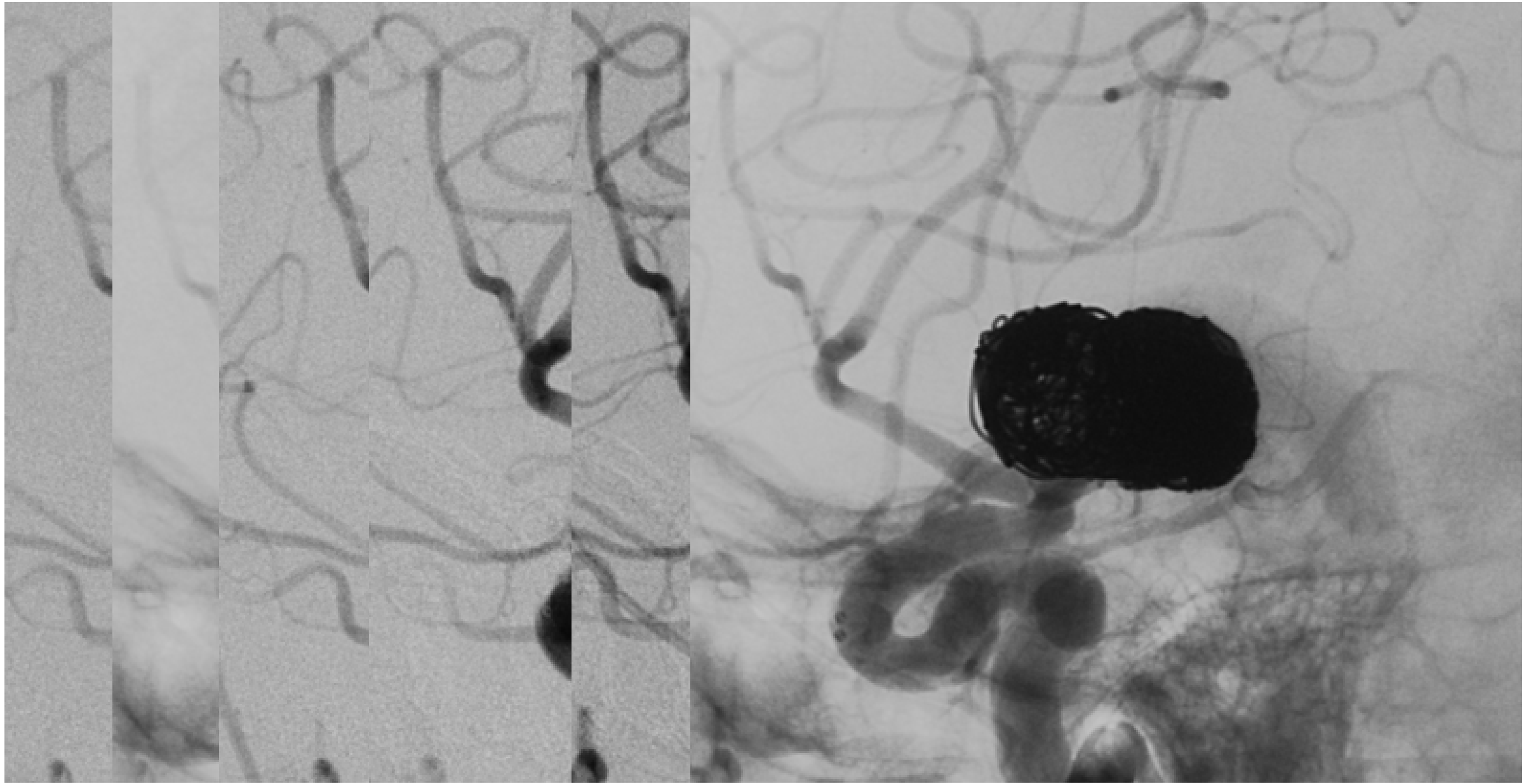


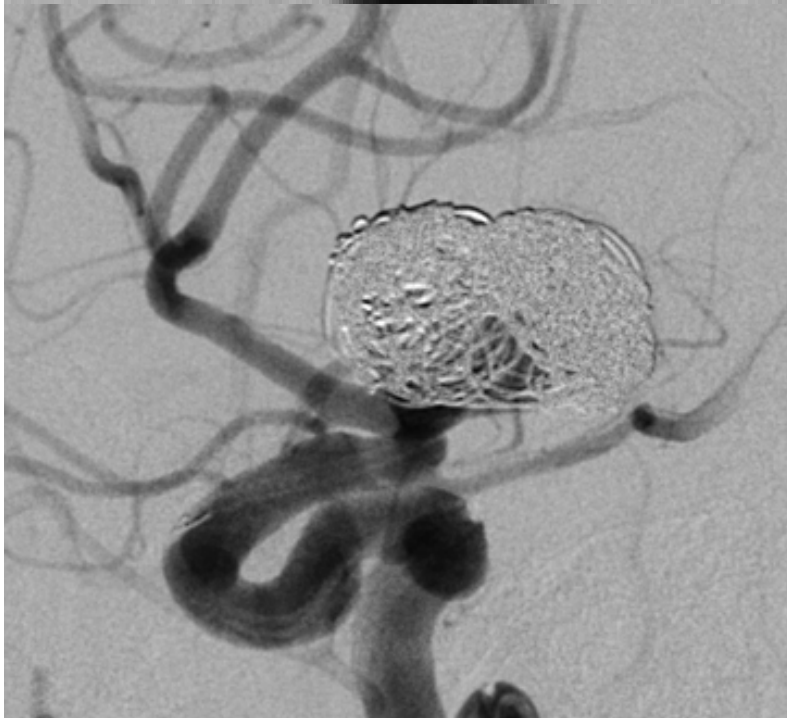
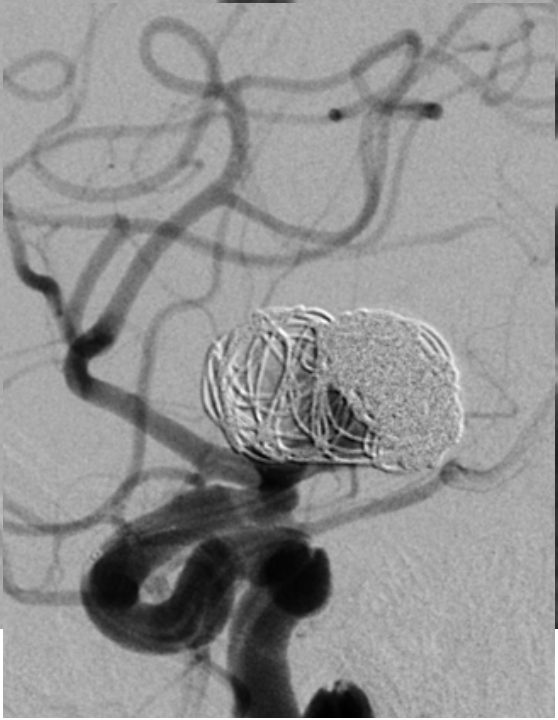
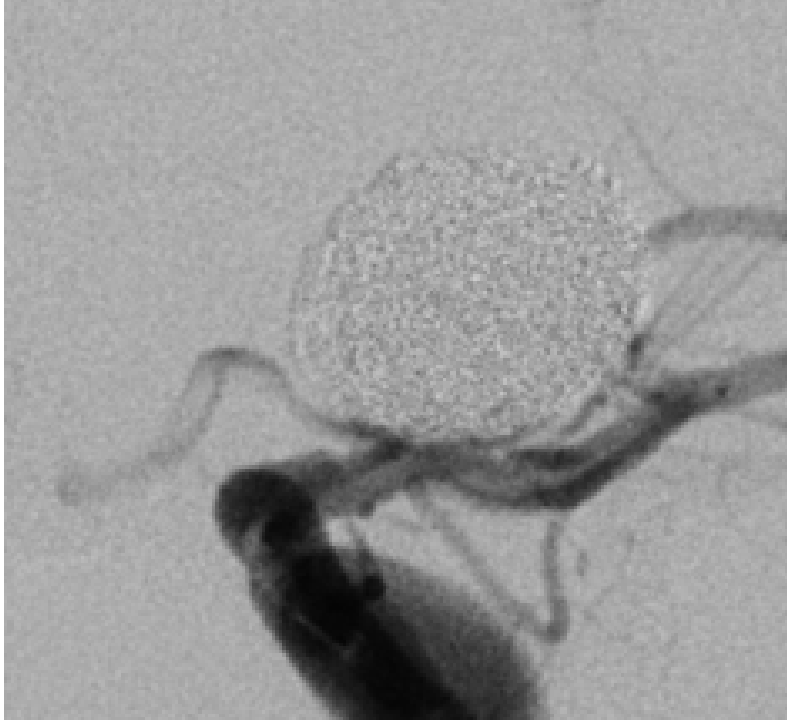
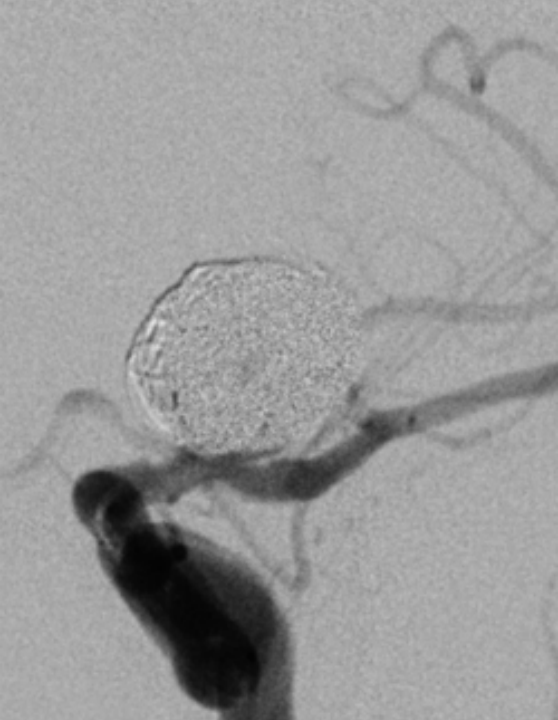
Working angle



Double catheter technique (SL-10 45° SL-10 90°)



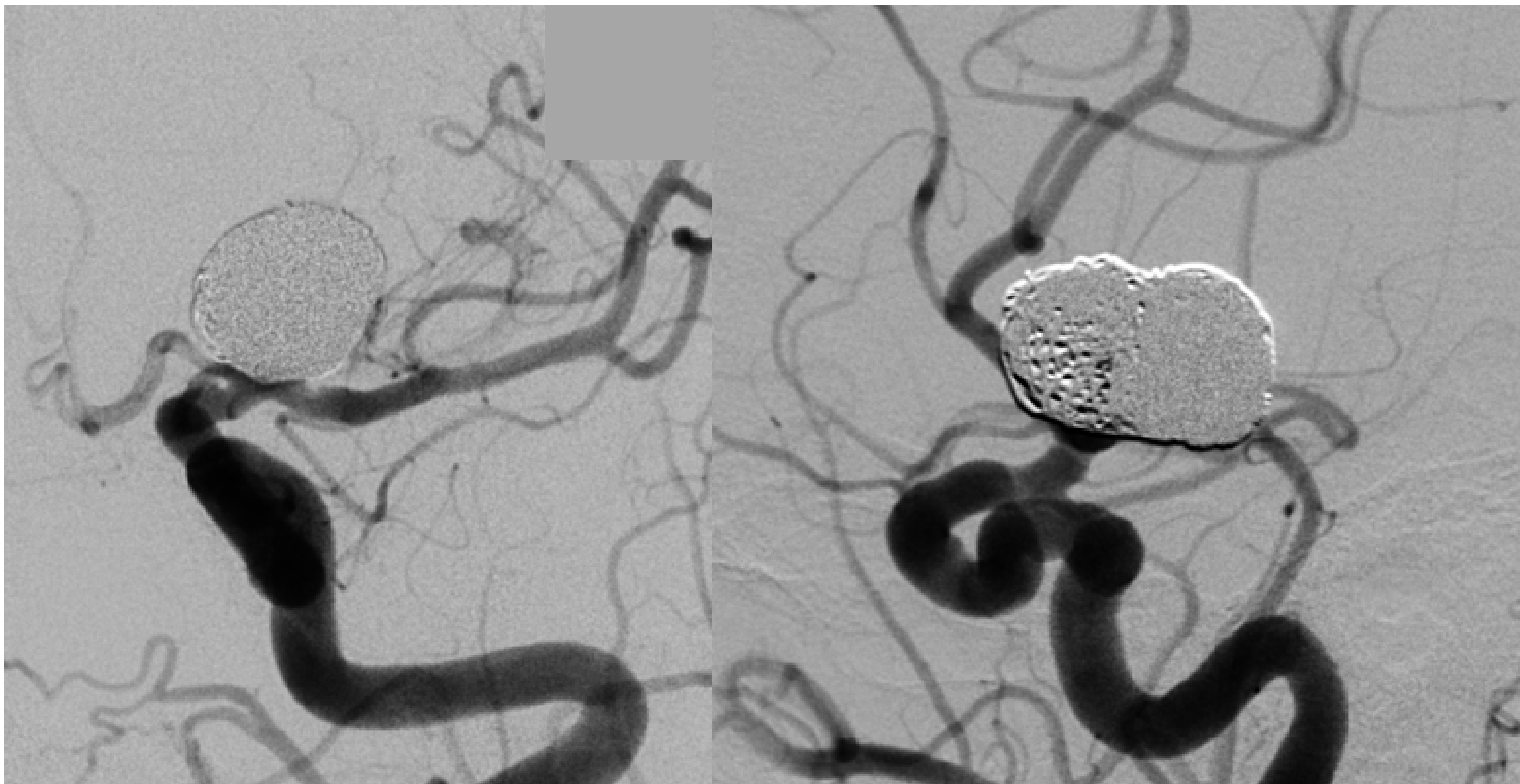




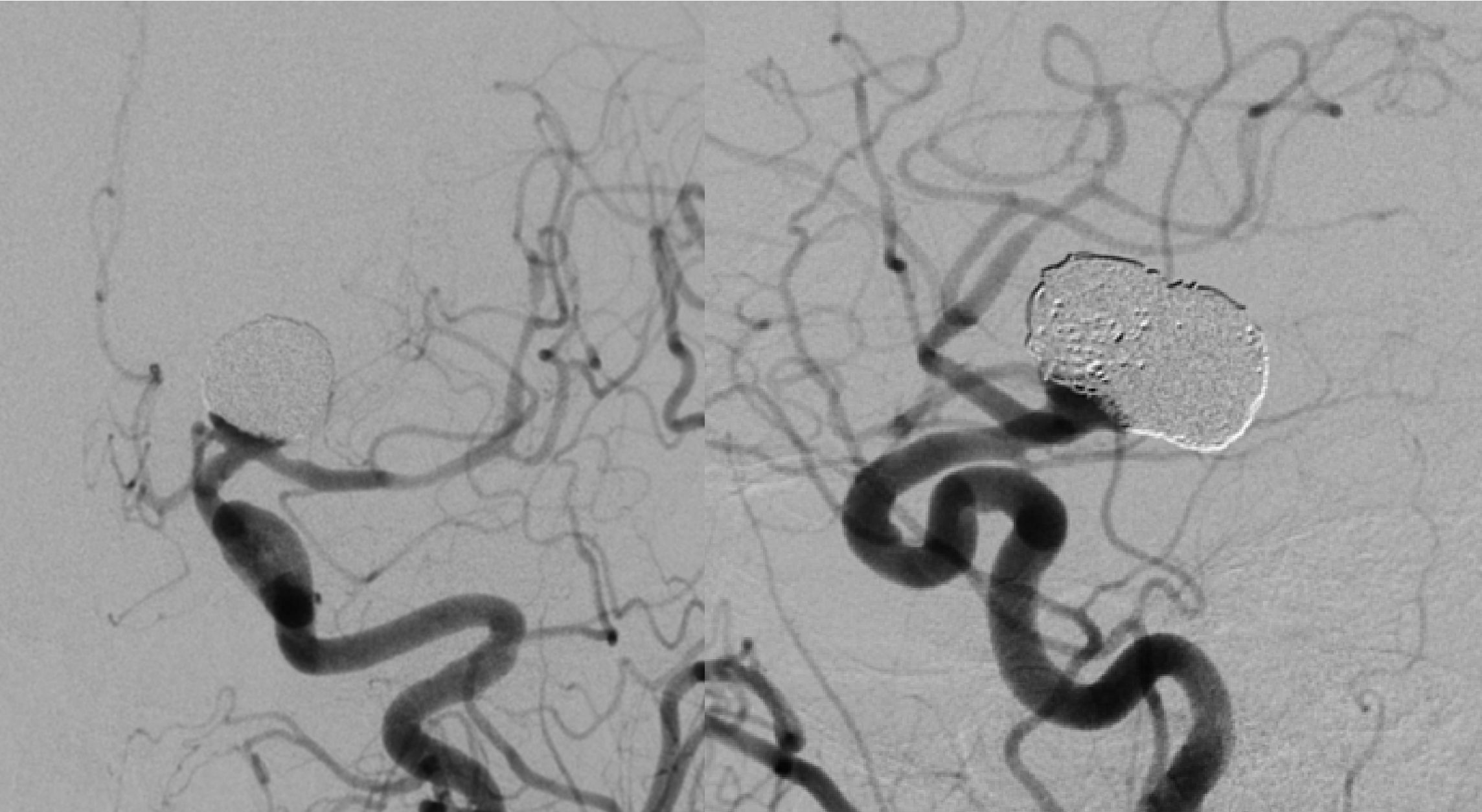
Used coils

1. Stryker Target XL 360 Standard 12mm × 45cm
2. Stryker Target XL 360 Standard 12mm × 45cm
3. Stryker Target XL 360 Soft 10mm × 40cm
4. Stryker Target XL 360 Soft 10mm × 40cm
5. Stryker Target XL 360 Soft 10mm × 40cm
6. Stryker Target XL 360 Soft 10mm × 40cm
7. Cerenovus Galaxy G3 8mm × 24cm
8. Cerenovus Galaxy G3 7mm × 21cm
9. Stryker Target 360 Soft 6mm × 20cm
10. Stryker Target 360 Soft 6mm × 20cm
11. Medtronic AXIUM PRIME 3D 5mm × 15cm
12. Medtronic AXIUM PRIME 3D 5mm × 15cm
13. Kaneka i-ED coil Complex Soft 5mm × 15cm
14. Kaneka i-ED coil Complex Soft 4mm × 10cm
15. Kaneka i-ED coil Complex Soft 4mm × 10cm
16. Kaneka i-ED coil Complex Soft 4mm × 8cm
17. Stryker Target 360 Ultra 4mm × 15cm
18. Stryker Target 360 Ultra 4mm × 15cm
19. Stryker Target 360 Ultra 4mm × 15cm
20. Kaneka i-ED coil Complex ExtraSoft 3mm × 6cm
21. Kaneka i-ED coil Complex ExtraSoft 3mm × 6cm
22. Kaneka i-ED coil Complex SilkySoft 3mm × 6cm
23. Kaneka i-ED coil Complex SilkySoft 3mm × 6cm
24. Kaneka i-ED coil Complex SilkySoft 3mm × 6cm
25. Medtronic AXIUM PRIME Helix 3mm × 8cm
26. Medtronic AXIUM PRIME Helix 3mm × 8cm
27. Kaneka i-ED coil Complex SilkySoft 3mm × 6cm
28. Kaneka i-ED coil Complex SilkySoft 3mm × 6cm
29. Kaneka i-ED coil Complex SilkySoft 3mm × 6cm
30. Kaneka i-ED coil Complex ExtraSoft 3.5mm × 8cm
31. Kaneka i-ED coil Complex ExtraSoft 3.5mm × 8cm
32. Stryker Target 360 Ultra 3mm × 10cm
33. Stryker Target 360 Ultra 3mm × 10cm
34. Kaneka i-ED coil Complex SilkySoft 2mm × 8cm
35. Kaneka i-ED coil Complex SilkySoft 2mm × 8cm
36. Kaneka i-ED coil Complex SilkySoft 2mm × 8cm
37. Kaneka i-ED coil Complex SilkySoft 1mm × 3cm
38. Kaneka i-ED coil Complex SilkySoft 1mm × 3cm
39. Kaneka i-ED coil Complex SilkySoft 1mm × 3cm
40. Kaneka i-ED coil Complex SilkySoft 1mm × 3cm
41. Kaneka i-ED coil Complex SilkySoft 1mm × 3cm
42. Kaneka i-ED coil Complex SilkySoft 1mm × 3cm
43. Stryker Target Helical Nano 1mm × 3cm
44. Kaneka i-ED coil Complex SilkySoft 1mm × 2cm
45. Kaneka i-ED coil Complex SilkySoft 1mm × 2cm

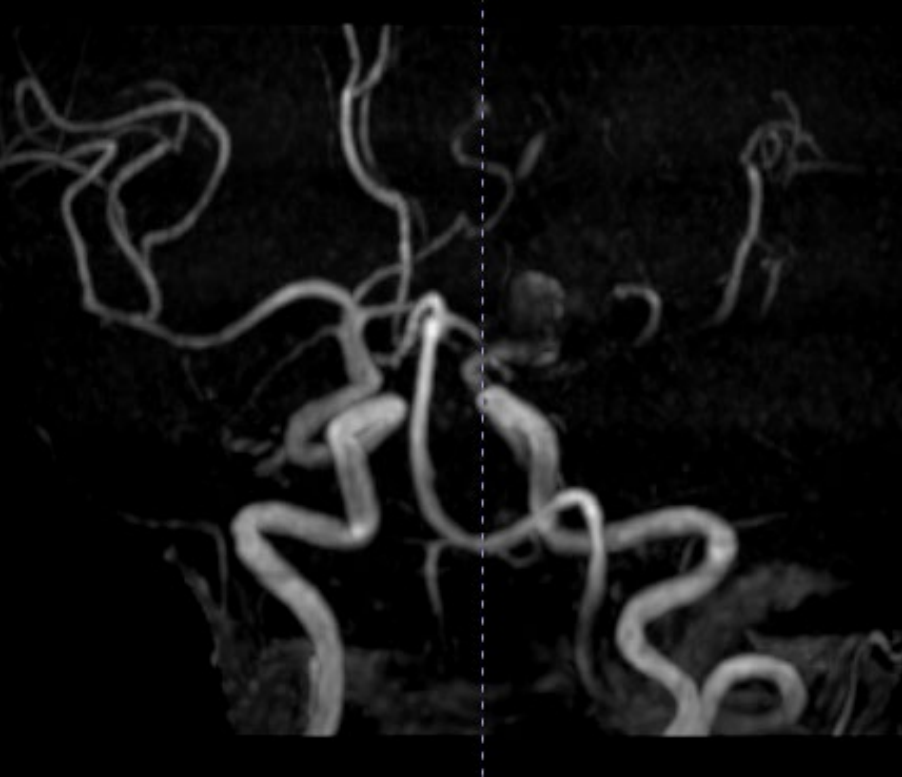
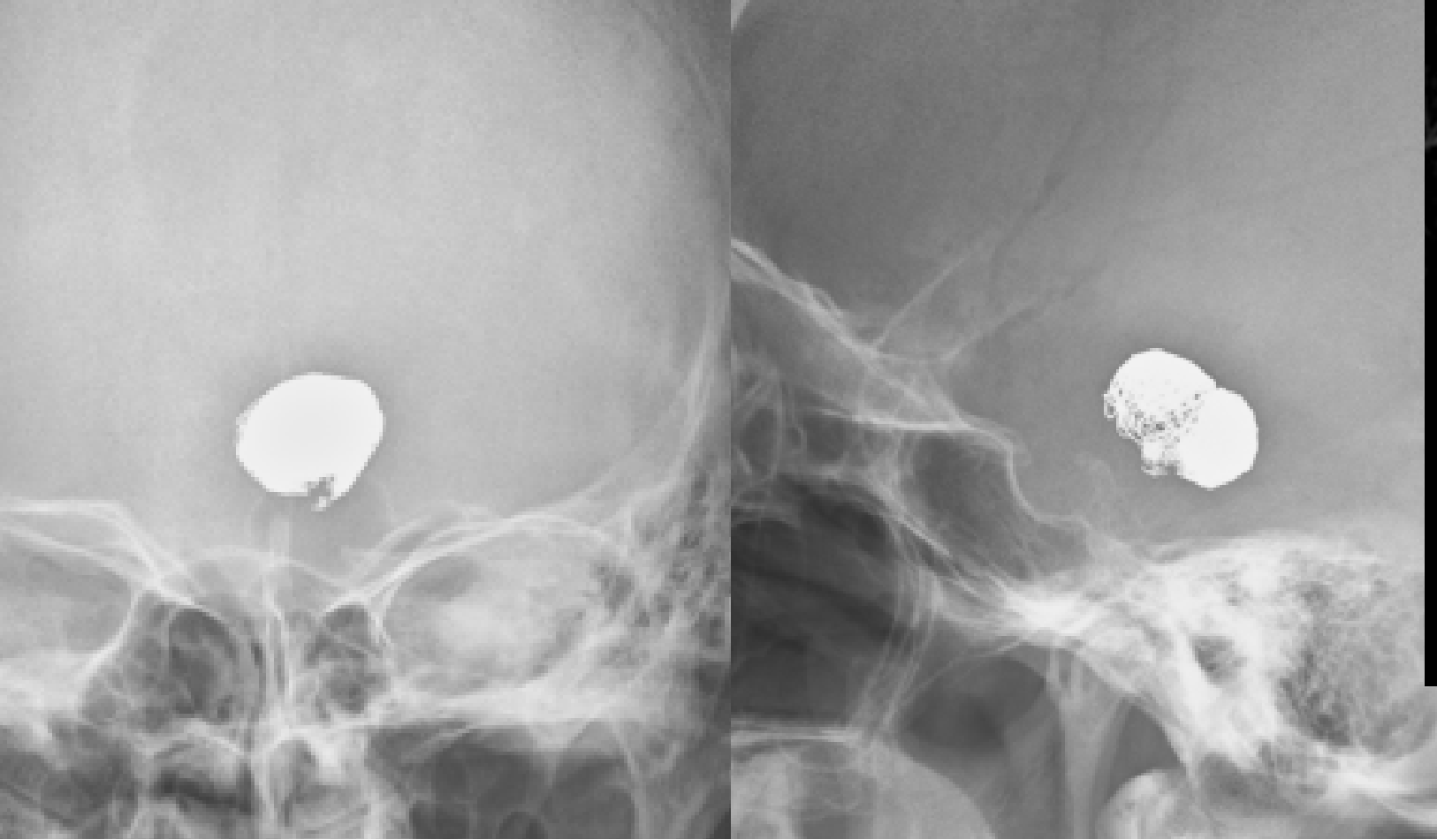
Immediate post @1st IVR



F/U Angiography (POD 14)



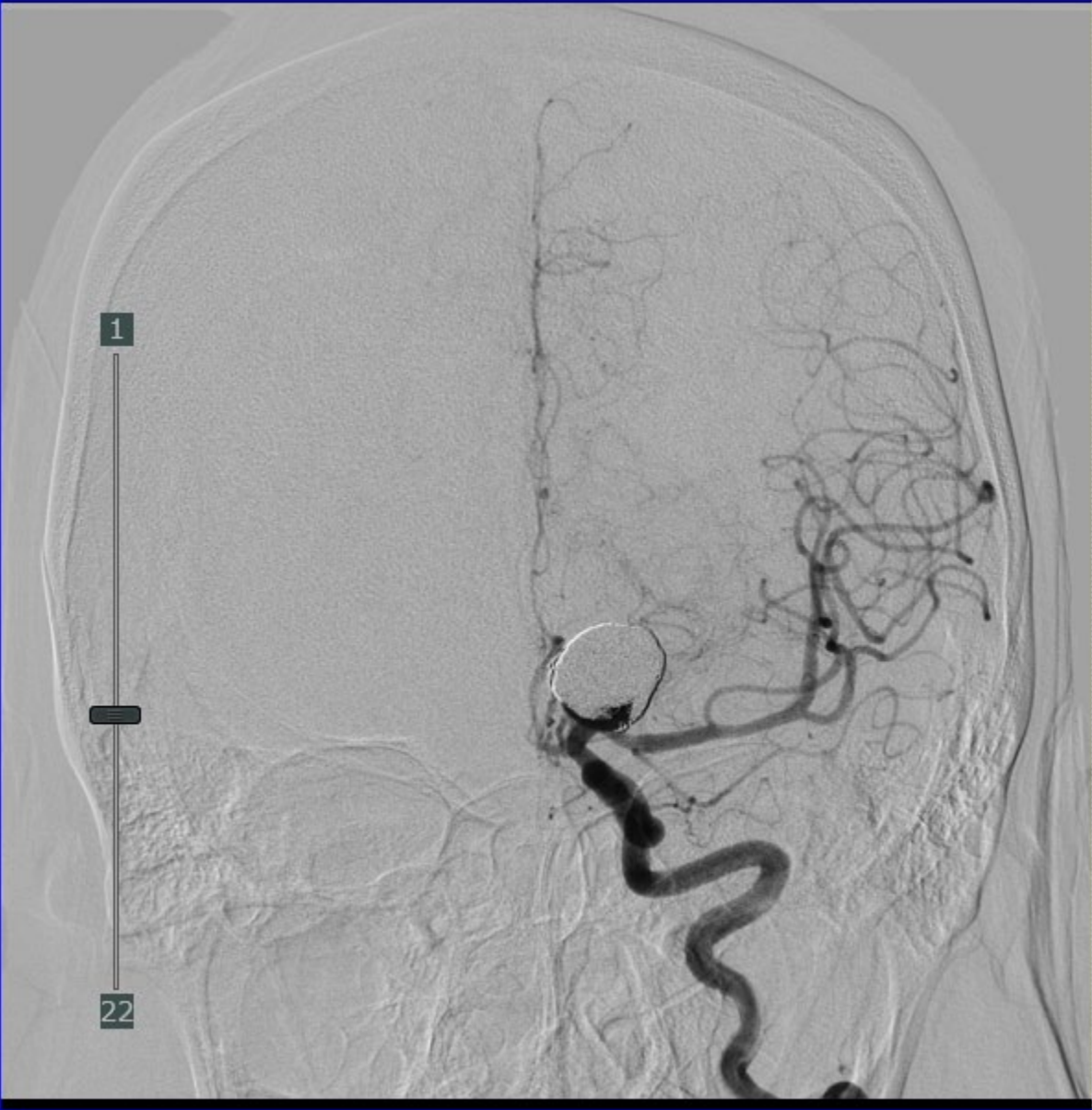
F/U craniogram & MRA @6mo.



F/U Angio@6mo. (Lt. CCAG)



F/U Angio@6mo. (Lt. ICAG)



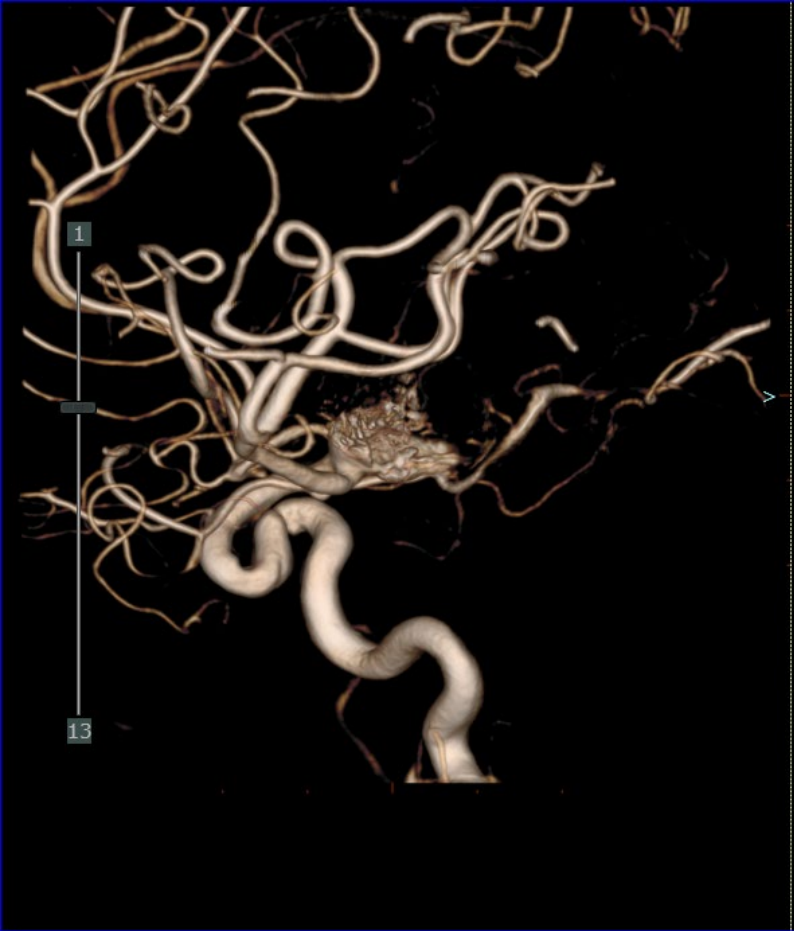
F/U Angio@6mo. (Lt. ICAG, mag.)



3D-RA



A-P

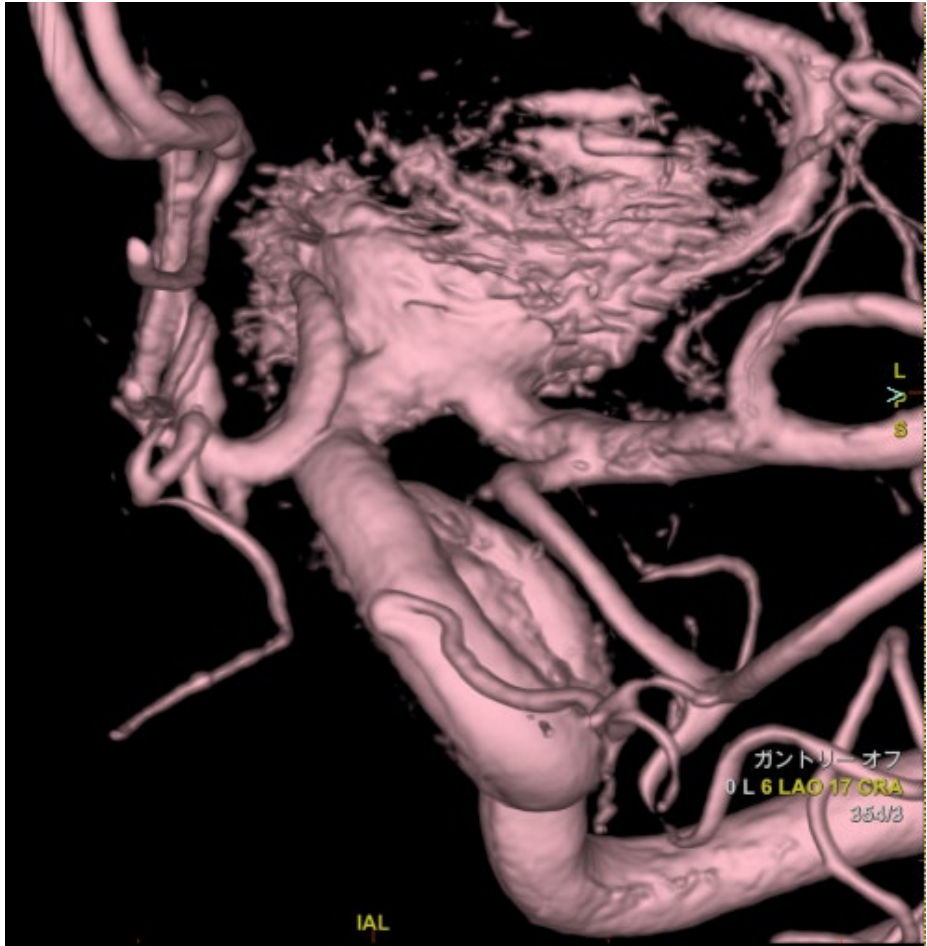
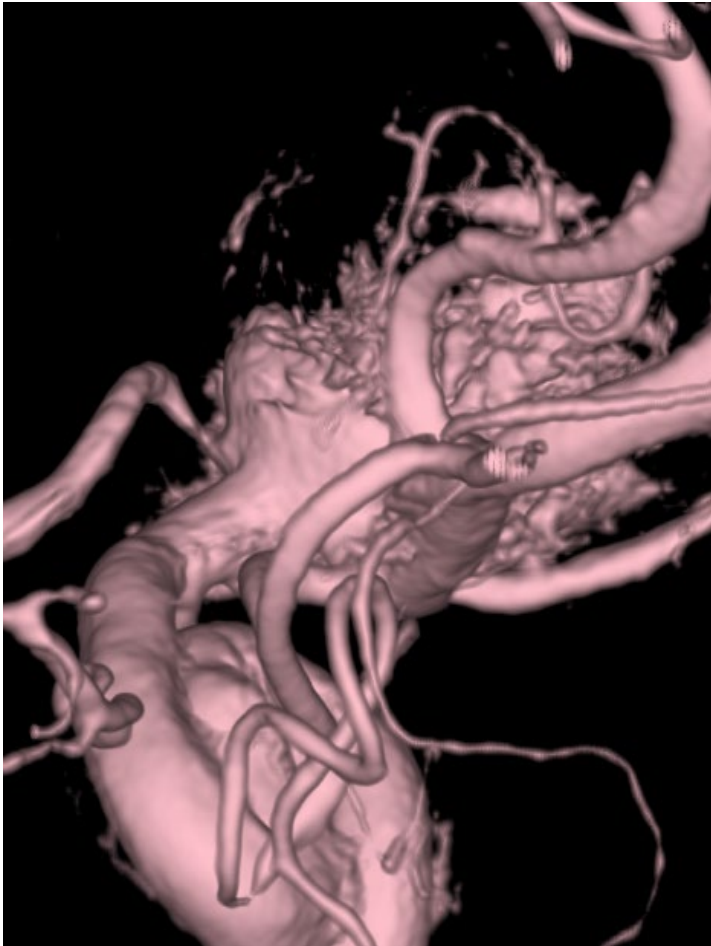


Lat.

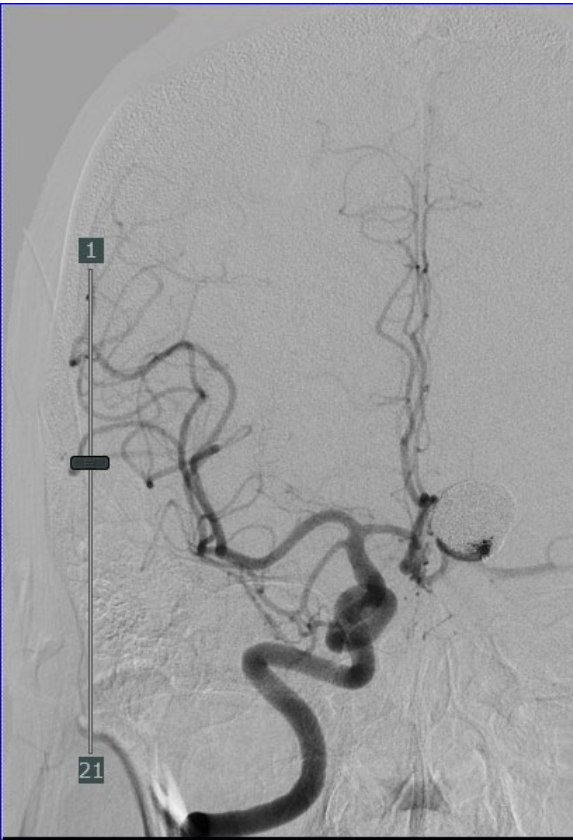


LAO 30°

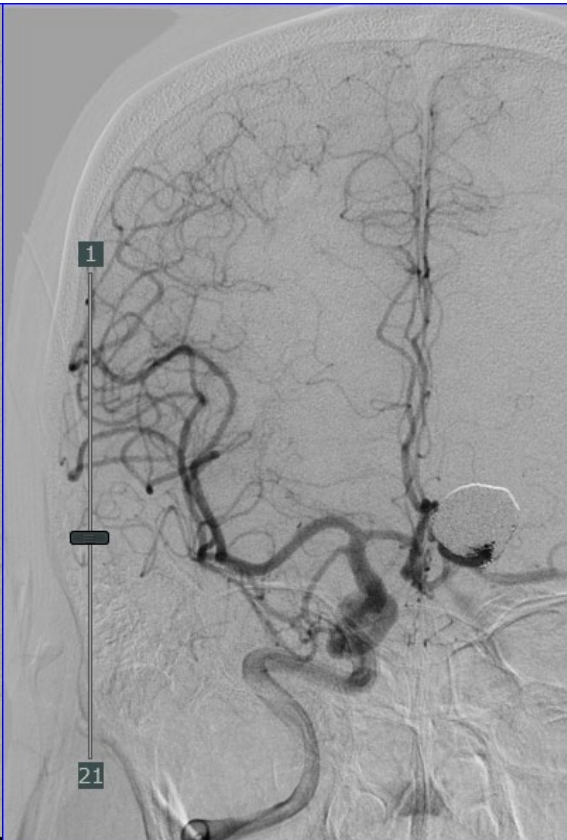
3D-RA



Lt. ICAG (Rt. CCA compression)



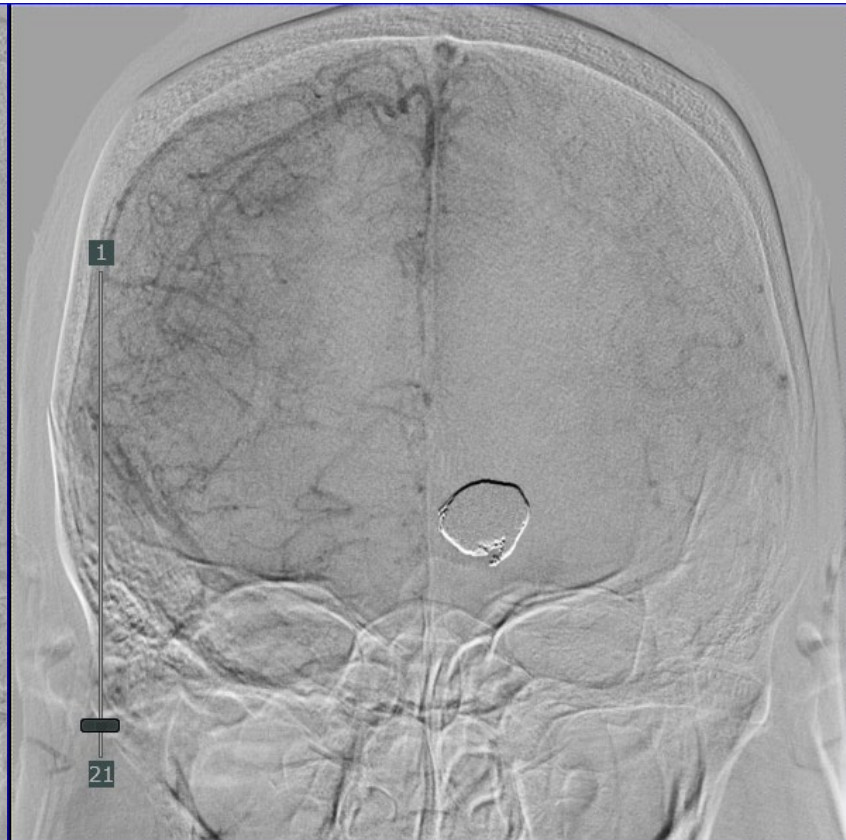
Arterial phase



Late arterial phase



Capillary phase



Venous phase

**Bil. ICAG
(Rt. Oblique)**



How do you treat this recurrent aneurysm?

1) Clipping

2) Other surgical procedure

3) Endovascular therapy

(a) Balloon assist technique

(b) Double catheter technique

(c) Stent assisted coiling (single, overlapping, Y-stent, T-stent)

(d) FD

(e) PulseRider

(f) W-EB